

ABOUT DECO CEMENTO

Deco Cemento Plaster is a ready-to-use plaster formulated to give high adhesion, strength, and durability. It offers a natural texture with medium variations that is like microcement. It is recommended for use on interiors or semi-exterior and it can be used on floors, walls, or showers to achieve seamless system.

It compliments both traditional and modern settings depending on how it is applied. It can be applied flat or mottled depending on your style. Color combinations and creative styles are unlimited. Its qualities will improve with time. It can be used in conjunction with our approved protective coats, sealers, or waxes. It must be applied in a minimum of 2 coats.

PRODUCT TYPES

Base Coat (Large Grain) | Finish Coat (Medium Grain)



Your Plastering Solutions

CAO Industries Sdn Bhd (187371-K)
A-07, Emerald Avenue, Jalan PS11,
Prima Selayang, 68100 Selangor,
Malaysia.

info@surfacearchi.com | www.surfacearchi.com

COLOR CHART

GREY COLOR SERIES



BROWN COLOR SERIES



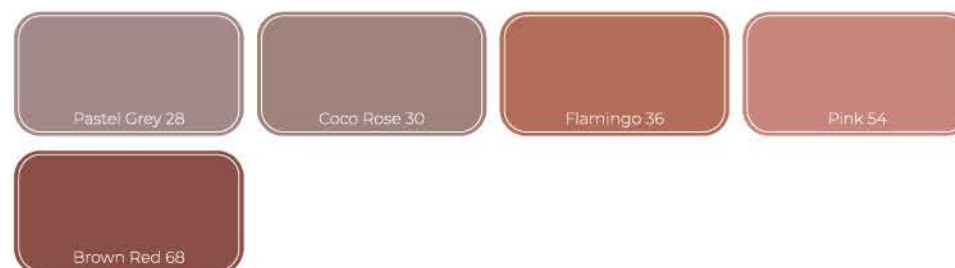
BLUE COLOR SERIES



GREEN COLOR SERIES



RED COLOR SERIES



DECO CEMENTO



SURFACE ARCHI



APPLICATION

1.  **Preparatory Work**
Mask and protect adjacent surfaces and remove any dust from surface. Mask about .5-1mm from adjacent surface or trim to allow for thickness of plaster. For tiled floors or walls, we recommend filling the tile grout lines with recommended grouting product before application of Deco Cemento.
2.  **1st Coat**
Using a trowel, apply Deco Cemento Base Coat (without color) on to the surface. While the plaster is fresh, incorporate Fibre Mesh (3mm x3mm) into the plaster. Apply a thinner coat over the Fibre Mesh to cover it. Ensure first coat is applied flat and evenly. Allow at least 24 hours for first coat to completely dry. Minor cracking might occur from excessive thickness, which is acceptable as long as there's no delamination or peeling. After complete dry, use sandpaper of 80 or 100 grit to sand away irregularities.
3.  **2nd Coat**
Apply Deco Cemento Base Coat (without color) over the previous layer. Make sure Fibre Mesh is no longer seen after the 2nd coat. Apply as even as possible to give a flat foundation to the subsequent finishing coats. Allow at least 24 hours to dry. After complete dry, use sandpaper of 80 or 100 grit to sand away irregularities.
4.  **3rd Coat**
On the 3rd coat, apply Deco Cemento Finish Coat (with color) in thin passes. Apply it tight and smooth. Allow at least 24 hours to dry. After complete dry, use sandpaper of 180 grit to sand away irregularities.
5.  **Final Coat**
On the last coat, apply thin coat of Deco Cemento Finish Coat (with color). Ensure it is tight, even and smooth. Allow at least 24 hours to dry. After complete dry, use sandpaper of 180 grit to sand away irregularities and smoothen it.
6.  **Sealer**
Ensure final coat is dry before applying DC Sealer. Dilute DC Sealer with 50% water. Use roller to apply DC Sealer in one coat on the surface evenly.
7.  **Protective Coats**
Ensure sealer is dry before applying protective coats. Mix two-part protective coats evenly before applying. Apply protective coats in at least two separate coats using roller. Wait for 1st coat to dry before applying the 2nd coat. At least 3 coats are recommended for shower area.

For normal walls, only two coats of Deco Cemento are required. Sealer (Step 6) and Protective Coats (Step 7) are compulsory for flooring and shower area.

Base Coat (Large Grain)



10kg - 60sqft / 2 layers
20kg - 120sqft / 2 layers

Finish Coat (Medium Grain)



10kg - 80sqft / 2 layers
20kg - 160sqft / 2 layers